

Heights (see also drawing sections):

- Tuinzaal: floor to cabletray 3280 mm
- floor to grid 3180 mm
- floor to concrete 3170 mm
- Witte zaal ceiling: 3050 and 2650 mm
- Open zaal ceiling: 3350 and 2625 mm
- Open zaal floor to grid: 3553 mm
- Cafe floor to grid: 2740 mm

Technical legend :

- Electric point
- Water point

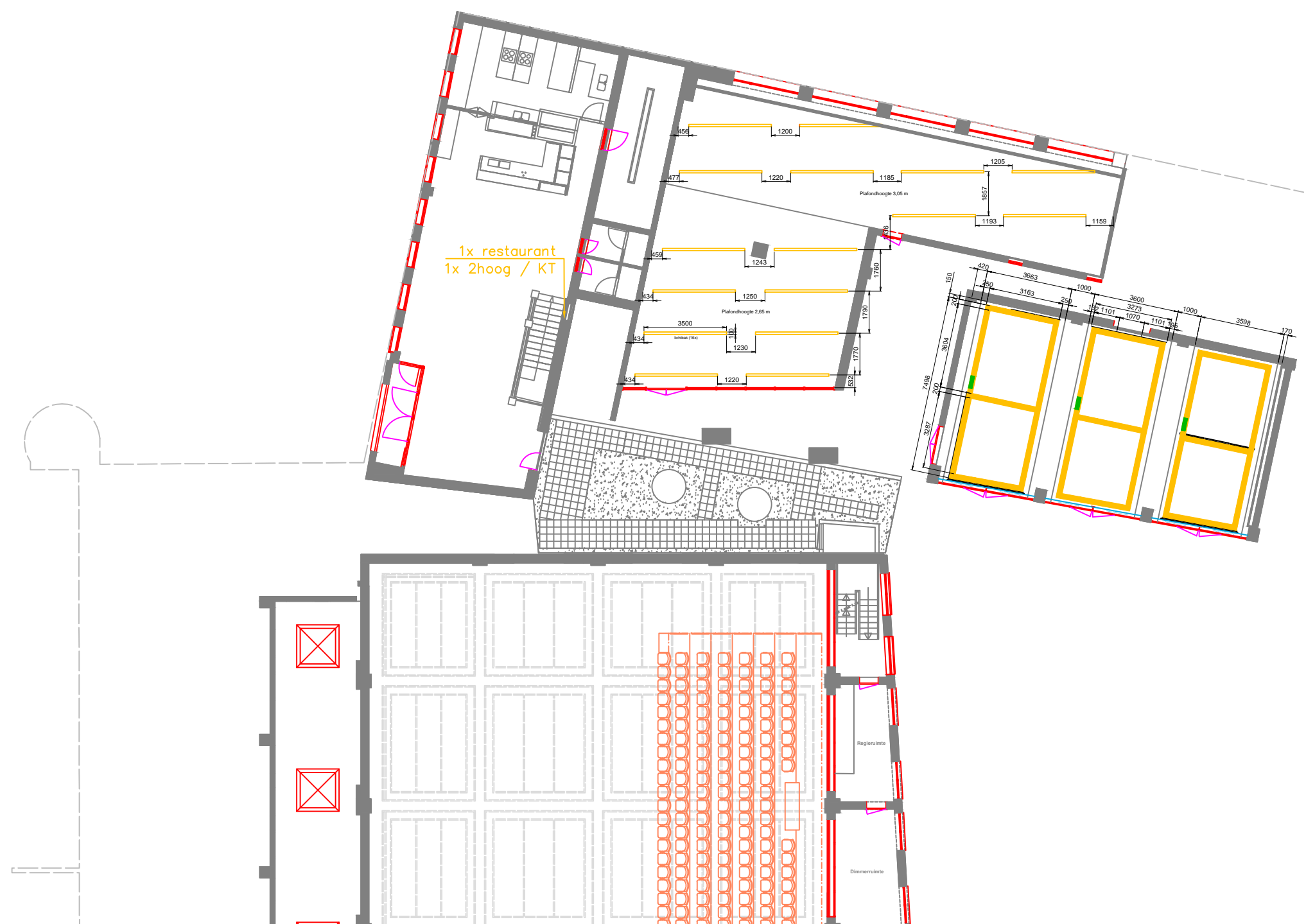
**To turn layers on/off use
Adobe Acrobat Reader.**

Decription: Theatre Witte Zaal,
Tuinzaal en Open Zaal - Ground Floor

Brakke Grond, Nes 45, Amsterdam

Scale: 1 : 200, format A3
Date: 6 July 2015

Drawn by: Bouke Bloemen



Heights (see also drawing sections):

- Tuinzaal: floor to cabletray 3280 mm
 floor to grid 3180 mm
 floor to concrete 3170 mm
- Witte zaal ceiling: 3050 and 2650 mm
- Open zaal ceiling: 3350 and 2625 mm
- Open zaal floor to grid: 3553 mm
- Cafe floor to grid: 2740 mm

Technical legend :

- Electric point
- Water point

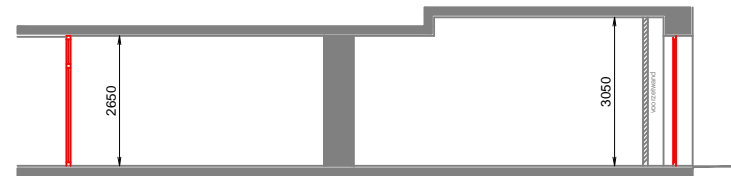
**To turn layers on/off use
 Adobe Acrobat Reader.**

Decription: Theatre Witte Zaal,
 Tuinzaal en Open Zaal - First Floor

Brakke Grond, Nes 45, Amsterdam

Scale: 1 : 200, format A3
 Date: 6 July 2015

Drawn by: Bouke Bloemen



section E-E

Heights (see also drawing sections):

Witte zaal ceiling: 3050 and 2650 mm

**To turn layers on/off use
Adobe Acrobat Reader.**

Description: Section Witte Zaal

Brakke Grond, Nes 45, Amsterdam

Scale: 1 : 150, format A3

Date: 6 July 2015

Drawn by: Bouke Bloemen